

# 4 Providing Correct and Speedy Information



**Emergency Countermeasures Headquarters** where appropriate decisions will be made upon collecting various information.

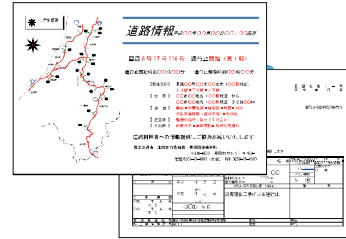
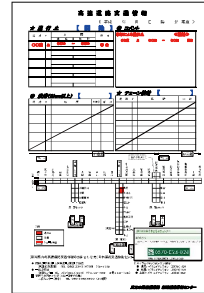
The city has permanently set up its Emergency Countermeasures Headquarters Conference Room at the main city office. In case of a nuclear disaster, the city will make appropriate decisions by collecting accurate information such as power plant information (based on the Nuclear Safety Agreement) from the power company and real-time road images.

## Prompt Distribution of Information to the Citizens

The city will provide prompt information to the citizens via every possible means of communication such as emergency FM radio broadcasts, area mail, etc.



Road images provided to the city by the Nagaoka National Highway Office



The highway information sent to the city by the Nagaoka National Highway Office, the Nagaoka Regional Promotion Bureau, and the East Nippon Expressway Co., Ltd.

## Check the different ways to get information in case of an emergency.

**Nagaoka City Website**  
Nagaoka Disaster Prevention Website

<http://www.bousai.city.nagaoka.niigata.jp/>  
Confirm updated information via Twitter.

**Radio (Emergency FM Radio)**  
FM Nagaoka (80.7 MHz)

**Via mobile phone and other similar devices**

- Area mail and emergency alert mail
- *Jûmin Anzen* (Resident Safety) Nagaoka

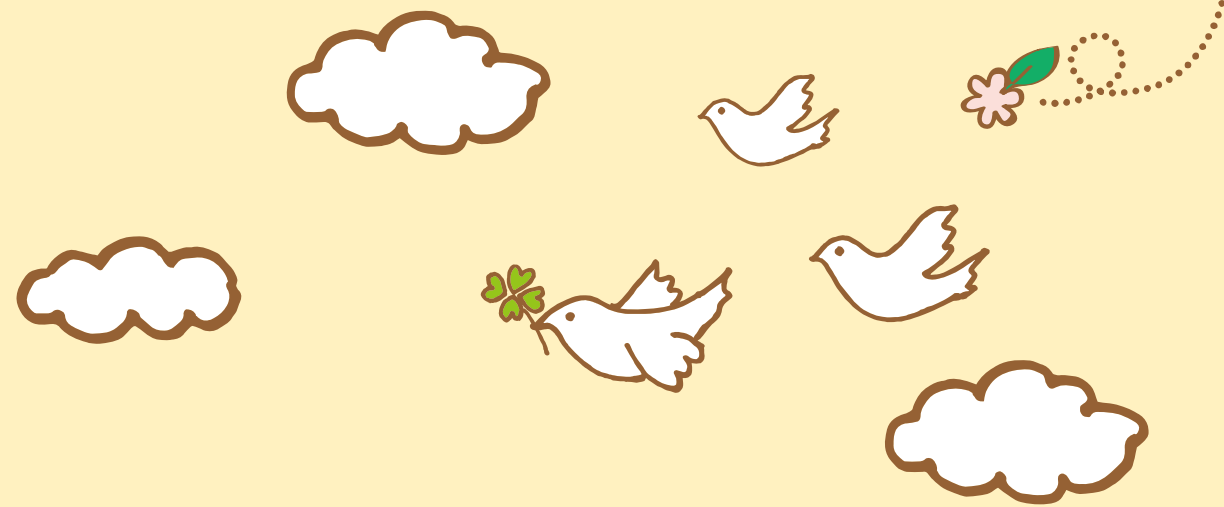
**TV/Cable TV**  
NCT Co., Ltd.  
Phone: 0120-080-009

Others	
<b>How to Care for Children</b>	If a nuclear disaster happens when children are at nursery schools, kindergartens, or schools, the city will secure the children's safety and hand them over to their guardians as soon as possible.
<b>Distribution of Potassium Iodide Pills</b>	The prefectural government has already purchased potassium iodide pills and has been in the process of discussing appropriate ways of distributing them. The city will continue to discuss this situation further with the prefectural government.
<b>Evacuation from Social Welfare Facilities</b>	The prefectural government has completed partnering for social welfare facilities with residents located within the Precautionary Action Zone (PAZ: the area within an approx. 5-kilometer radius from the nuclear power plant). The prefectural government is also considering countermeasures for such facilities within the Urgent Protective Action Planning Zone (UPZ: the area within an approx. 5- to 30-kilometer radius). The city will work together with the prefectural government to implement necessary countermeasures.

Copies of the booklet entitled "The Nagaoka City Evacuation Plan in Case of Nuclear Accidents" are available at City Hall Plaza - Aôre Nagaoka, district branch offices, and community centers. You can also check the city website for the booklet.

Published in March 2016 by: Nagaoka City Nuclear Safety Countermeasures Office  
1-4-10 Otedori, Nagaoka City, Niigata Prefecture 940-8501  
Phone: 0258-35-1122 (City Office) Phone: 0258-39-2305 (Nuclear Safety Countermeasures Office) Fax: 0258-39-2309  
URL <http://www.city.nagaoka.niigata.jp/shisei/cate01/nuclear-safety/>

Keep this booklet handy for your reference.



# To Ensure Your Safety and Security

Taking Shelter Indoors and Evacuation in Case of Nuclear Accidents



# What to do first

The City of Nagaoka established the Nagaoka City Evacuation Plan in Case of Nuclear Accidents based on the Nagaoka City Area Disaster Prevention Plan (Nuclear Disaster Countermeasures). This plan specifies the basic framework for distributing information regarding protective measures, evacuation shelters, arrangement of means of evacuation, etc. in case of nuclear accidents or probable nuclear accidents at the Kashiwazaki-Kariwa Nuclear Power Plant.

This booklet summarizes the things you should do and keep in mind when planning your evacuation. Please make sure you understand the contents of this booklet and stay calm by getting accurate information in case of an emergency.

Different countermeasures are to be taken based on your distance from the accident site.

Approximate Distance from the Kashiwazaki-Kariwa Nuclear Power Plant	Affected Areas	Basic Countermeasures
up to 5 km	Kariwa Village and Part of Kashiwazaki City	Immediate Evacuation
5-30 km	Nagaoka Nakanoshima Koshiji Mishima Yamakoshi Oguni Washima Teradomari Yoita Kawaguchi	<p><b>First, take shelter indoors.</b></p> <ul style="list-style-type: none"> <li>Later, only residents in areas with high radiation levels will evacuate.</li> <li>Take potassium iodide pills if necessary.</li> </ul>
30-50 km	Tochio	<p><b>Consider accepting evacuees.</b></p> <p>If necessary, take shelter indoors, evacuate, and take potassium iodide pills.</p>

# 1 First, take shelter indoors.

You are advised to take shelter indoors to protect yourself from the release of radioactive substances.

Taking shelter indoors is a protective measure to reduce radiation exposure levels.

Rushing to evacuate with your car or other means of transportation may cause traffic congestion, which may lead to a higher risk of disaster.



Remain indoors until further notices are announced by the city office.

You may have to stay indoors for about a week depending on the situation.



You can check radiation levels in Nagaoka City here.

- Radiation levels at monitoring posts can be accessed by zooming in on the detailed area maps.
- This system allows even smartphone users to access the information via the city's website.

URL <http://www.radiation.city.nagaoka.niigata.jp>

## 2 Evacuation will be conducted exclusively for residents in areas with high radiation levels.

### Monitoring

Evacuation will be conducted only for residents in areas with monitored radiation levels higher than the limit.

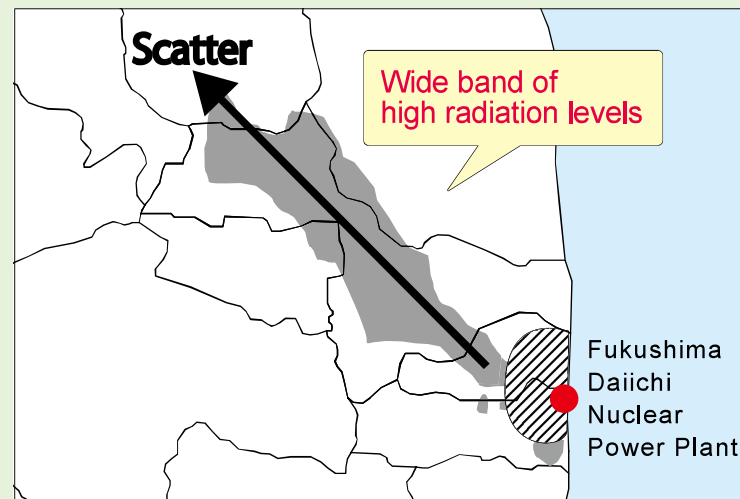


The national government and other authorities will monitor radiation levels. There is a high possibility that **only residents of specific areas will be ordered to evacuate** rather than all of the city's residents since the city covers such a large area stretching north to south. (see image below)

Operational Intervention Level (OIL) is a standard that determines when to start evacuation and other countermeasures. It can be found in The National Guidelines for Nuclear Disaster Countermeasures.

▲ One of eight monitoring posts (as of March 1, 2016) installed throughout the city

Reference: Scattering of radioactive material during the Fukushima Daiichi nuclear disaster



The above map was made by the City of Nagaoka based on the data from the Ministry of Education, Culture, Sports, Science and Technology and the U.S. Department of Energy issued on May 6, 2011 entitled "the Results of Aircraft Monitoring by the Ministry of Education, Culture, Sports, Science and Technology and the U.S. Department of Energy (a radiation level monitoring map of the area in the 80-kilometer radius from Fukushima Daiichi Nuclear Power Plant)." The above map highlights in gray the areas with an air radiation dose of 19 – 91 microsieverts per hour at the height of one meter above the ground (converted into current values as of April 29). The slashed area shows the region around the nuclear power plant where monitoring results have not been obtained.

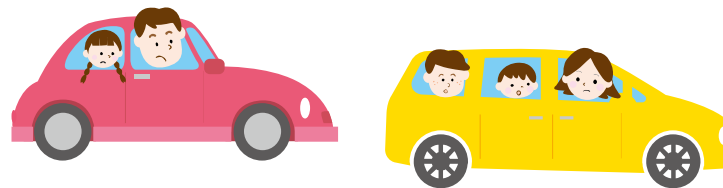
Remain indoors.

Evacuation should be conducted based on accurate information.

When evacuating, stay calm and do not rush. National guidelines suggest that evacuation be conducted within a week if radiation levels exceed 20 microsieverts per hour.

#### Evacuating with your own car

- Evacuate by following the city's instructions.
- As a rule, you should use your own car to evacuate.
- In order to avoid traffic congestion, **carpool as much as possible.**

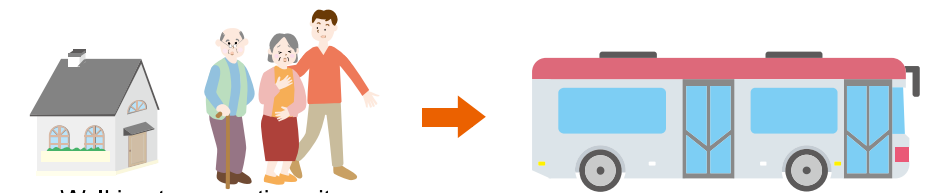


#### Evacuating by bus

- Residents who cannot evacuate with their own cars should **evacuate by bus or other means of transportation provided by the city.**

Help your neighbors as much as possible. Be aware of your neighbors and assist the elderly and people with special needs.

Local disaster prevention centers and other facilities are the designated meeting sites for evacuation by bus. (Please refer to p.7)



Via major national and prefectural highways or expressways

Radiation contamination monitoring during evacuation  
Levels of radiation contamination will be checked during evacuation as needed. The details of the prefectural government's plan for actual testing sites, testing methods, and other points are still under consideration.

#### Meeting sites for evacuation



First, evacuees head for their designated **meeting sites for evacuation.** Then, they move gradually to their designated shelters in turn.

Evacuees move to their respective evacuation shelters.



Shelter



Shelter



Shelter

### Evacuation

# 3 Basic Locations of Designated Evacuation Shelters

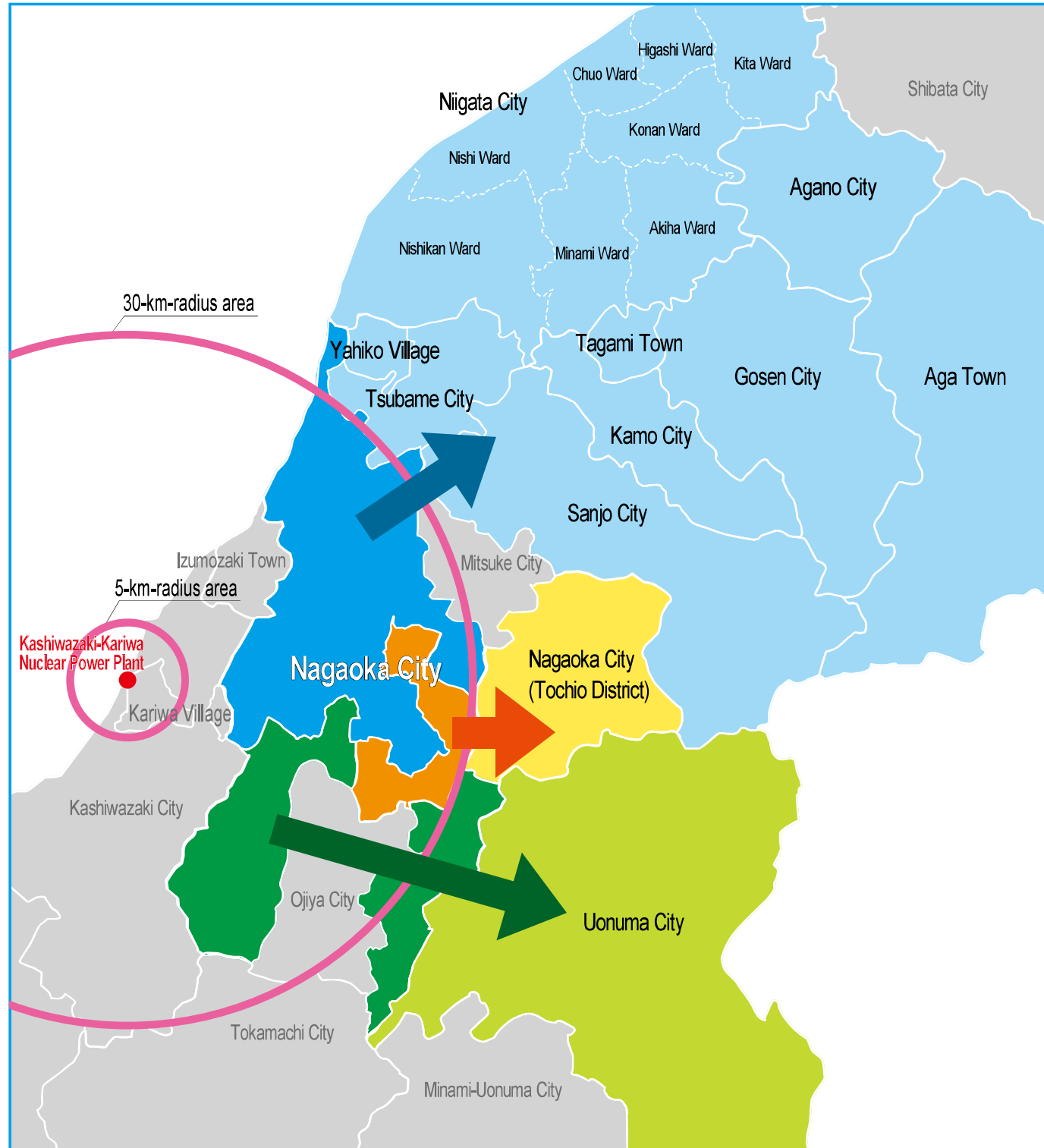
The Nuclear Safety Countermeasures Study Group, organized by all the municipalities of Niigata Prefecture, agreed upon the partnering municipalities for accepting evacuees from the area within a 30-kilometer radius from the Kashiwazaki-Kariwa Nuclear Power Plant.

Based on this agreement, the city had discussions with these municipalities and allocated the city's 40 communities to the accepting municipalities and designated evacuation routes to these places.

However, depending on the situation, locations of municipalities accepting evacuees may change.



▲ The 11<sup>th</sup> Nuclear Safety Countermeasures Study Group Meeting organized by the local municipalities (July 28, 2015)



Area Community District Branch	Meeting Sites for Evacuation by Bus	Municipalities Accepting Evacuees	Meeting Sites for Evacuation	
Senju Sakanoue Omotemachi Nakajima	Minami JHS Sakanoue ES Omotemachi ES Nakajima ES	Gosen City	Gosen City Sôgô Hall Gosen City Baseball Stadium Sakura Arena (Muramatsu Gym)	7-11 Asahi-cho, Gosen City 0250-42-5194 580-1 Maruta, Gosen City 0250-42-5194 8074-1 Ishizone, Gosen City 0250-58-6373
Kanda Kawasaki	Kanda ES Kawasaki ES Kawasaki-Higashi ES	Agano City	Agano City Library	1028 Sogo, Agano City 0250-67-2500
Suyoshi	Suyoshi ES	Aga Town	Roadside Station, <i>Aga-no-Sato</i>	4301 Ishima, Aga Town 0254-99-2121
Miyauchi	Miyauchi JHS Kamigumi ES Ishizaka ES Maekawa ES	Sanjo City	Sanjo-Tsubame Sôgô Ground	Within Sanjo City Kami-Sugoro Area 0256-34-5586
Shiromaru	Shiromaru ES	Kamo City Tagami Town	Kamo Culture Hall Tagami Town Hall	2-3-5 Saiwai-cho, Kamo City 0256-53-0842 3070 Oaza Haragasaki-Shinden Tagami Town 0256-57-6222
Aramachi Fusoki Yamamoto Shingumi Kurojo Nakanoshima	Kita JHS Fusoki ES Uruse ES Shingumi ES Kurojo ES Nakanoshima Culture Center Kamidori ES Shinjo ES Sun Paruko Nakanoshima	Niigata City (Kita Ward) (Higashi Ward) (Konan Ward) (Akiha Ward)	Denka Big Swan Stadium Hard-Off Eco Stadium Niigata Shirone Culture Center	67-12 Seigoro Chuo Ward, Niigata City 025-287-8811 570 Nagata Chuo Ward, Niigata City 025-287-8900 1755-1 Joge-Suwanoki Minami Ward, Niigata City 025-373-6311
Ojima Shimo-Kawanishi Kami-Kawanishi Fukuto Ojigawa Sekihara Mishima	Ojima ES Shimo-Kawanishi ES Kami-Kawanishi ES Fukuto ES Ojigawa Community Center Sekihara ES Hiyoshi ES Mishima Branch Office Wakinomachi ES Mishima Gym Washima Health Center Teradomari JHS Teradomari Culture Center Teradomari Center Okozu Yoita Gym	Niigata City (Chuo Ward) (Nishi Ward) (Minami Ward) (Nishikan Ward)	Niigata City <i>Midori to Mori no Sports Park</i> Niigata Prefecture Sôgô Training Center <i>Komeguri no Sato Park</i>	1018-1 Itai Nishi Ward, Niigata City 025-379-3766 100-1 Sowa Nishi Ward, Niigata City 025-261-1331 4290 Maze Nishikan Ward, Niigata City 0256-72-8454 (Industrial Tourism Division)
Washima Teradomari				
Yoita				
Kibogaoka Higoshi Miyamoto Ozumi Shinsai Aobadai	Kibogaoka ES Higoshi ES Miyamoto ES Ozumi ES Fukasawa ES Aobadai ES	Tsubame City Yahiko Village	Tsubame City Bunsui Community Center Roadside Station, Kugami Yahiko Gym	2-5-1 Bunsui-Shinmachi Tsubame City 0256-97-2703 5866-1 Kugami, Tsubame City 0256-98-0770 1753-1 Kamiizumi, Yahiko Village 0256-94-2876
Toyoda Tokamachi Muikaichi Ota Yamadori	Toyoda ES Tokamachi ES Yamayazawa ES Ota ES and JHS Kagi ES	Nagaoka City (Tochio District)	Roadside Station, R290 Tochio	1764 Tochio-Miyazawa Nagaoka City 0258-77-0100
Koshiji Yamakoshi Oguni	Koshiji Gym Koshiji-Nishi ES Yamakoshi Gym Oguni Hall Kami-Oguni ES Shimo-Oguni ES Kawaguchi Community Hall Kawaguchi JHS	Uonuma City	Uonuma City Koidego Culture Hall Uonuma City Horinouchi Office Building	1848-1 Himizo, Uonuma City 025-792-8811 130 Horinouchi, Uonuma City 025-794-2111

JHS: Junior High School  
ES: Elementary School